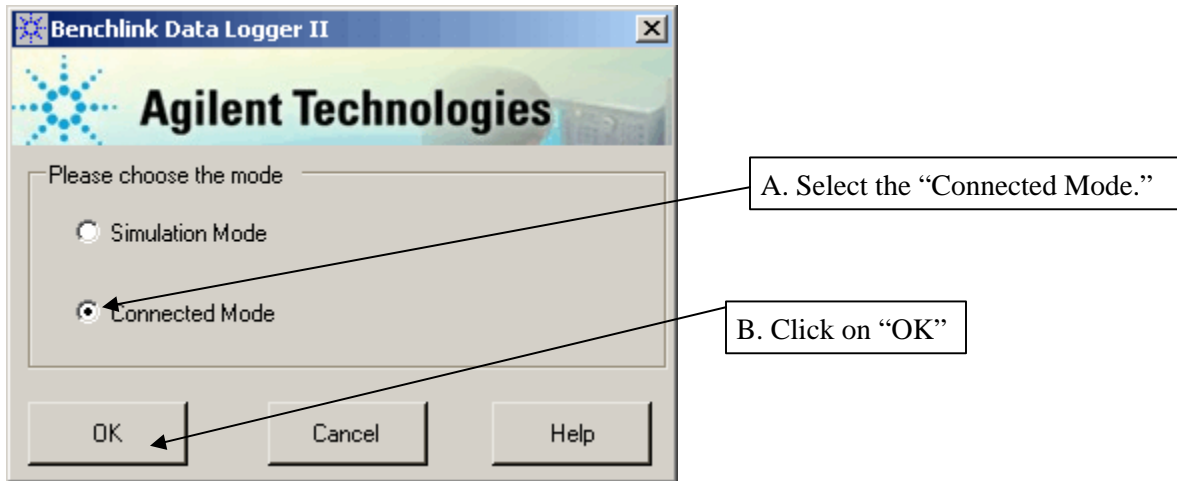


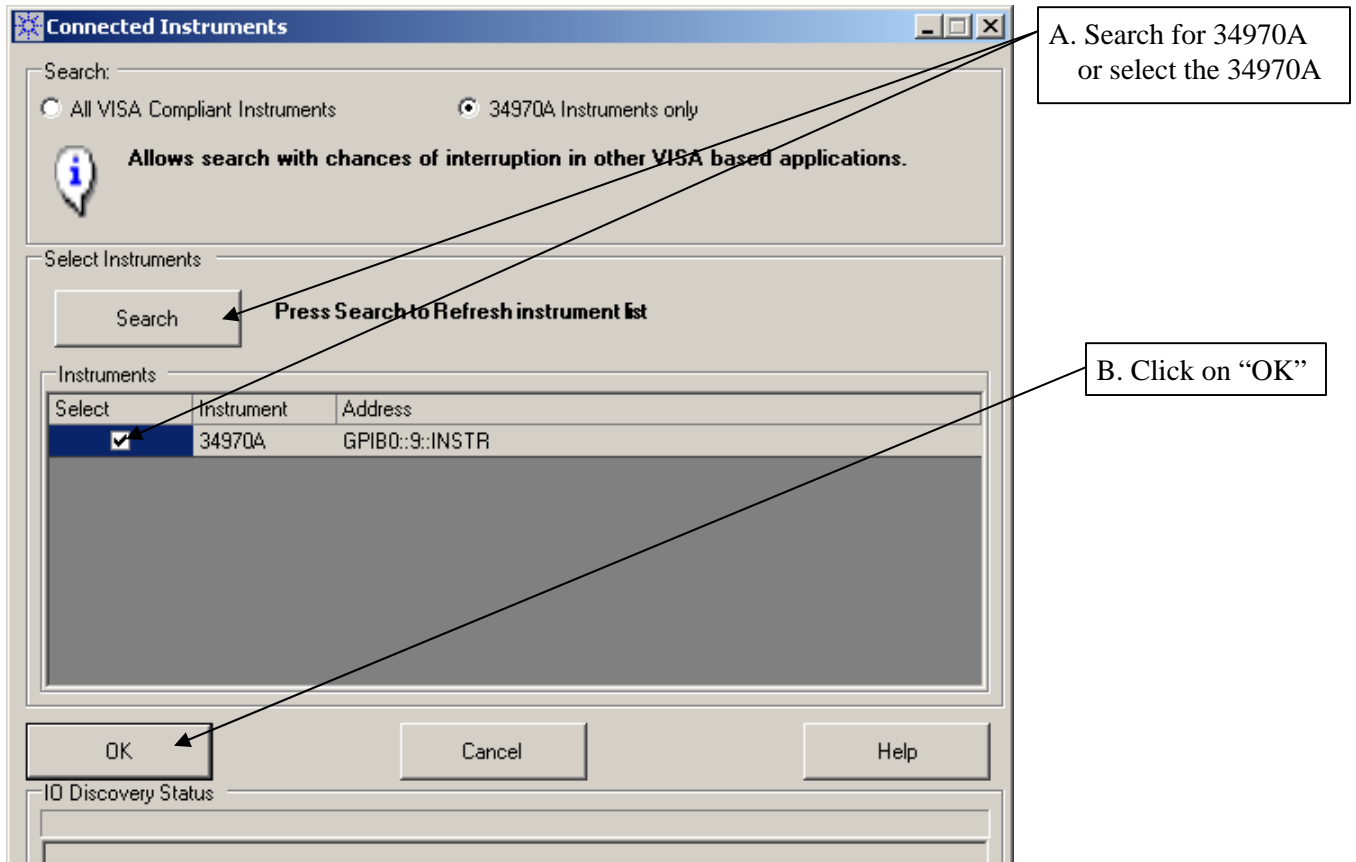
Retrieving Data from an Unattended 34970A Scan using BenchLink II

Do the following:

1. Run BenchLink DataLogger II and select the “Connected Mode”, as follows:

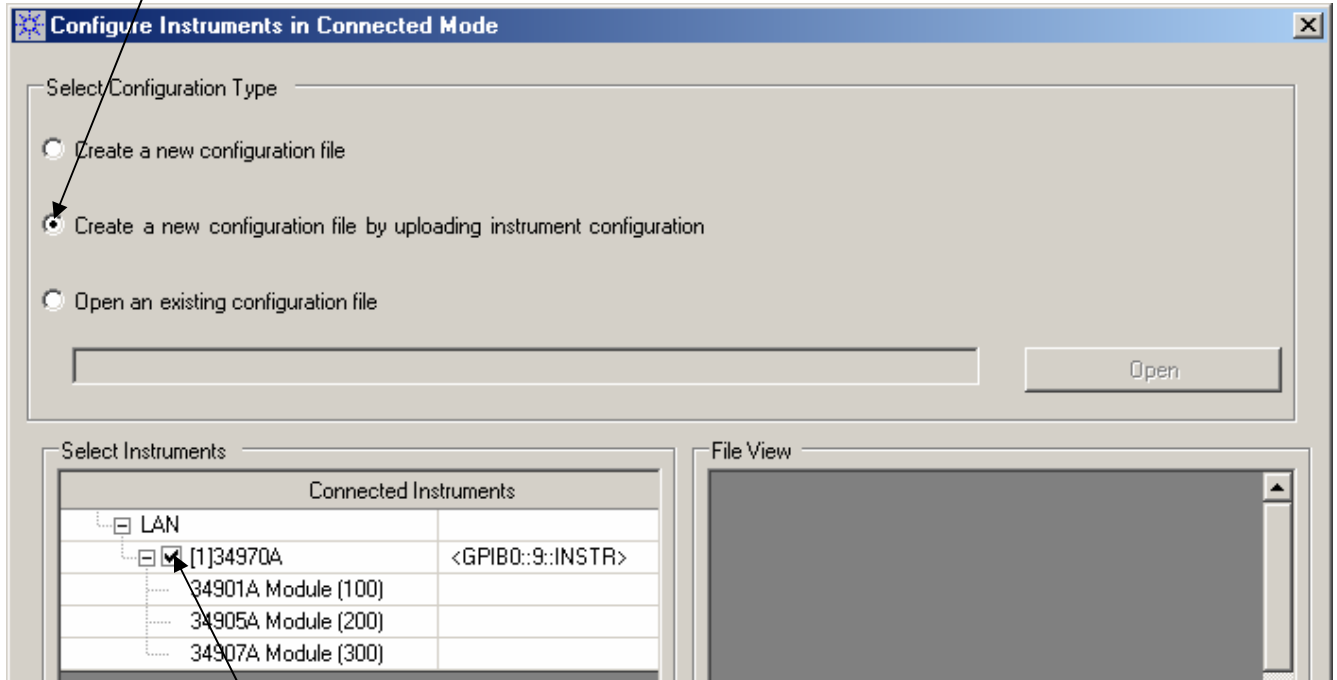


2. Select the 34970A to connect.



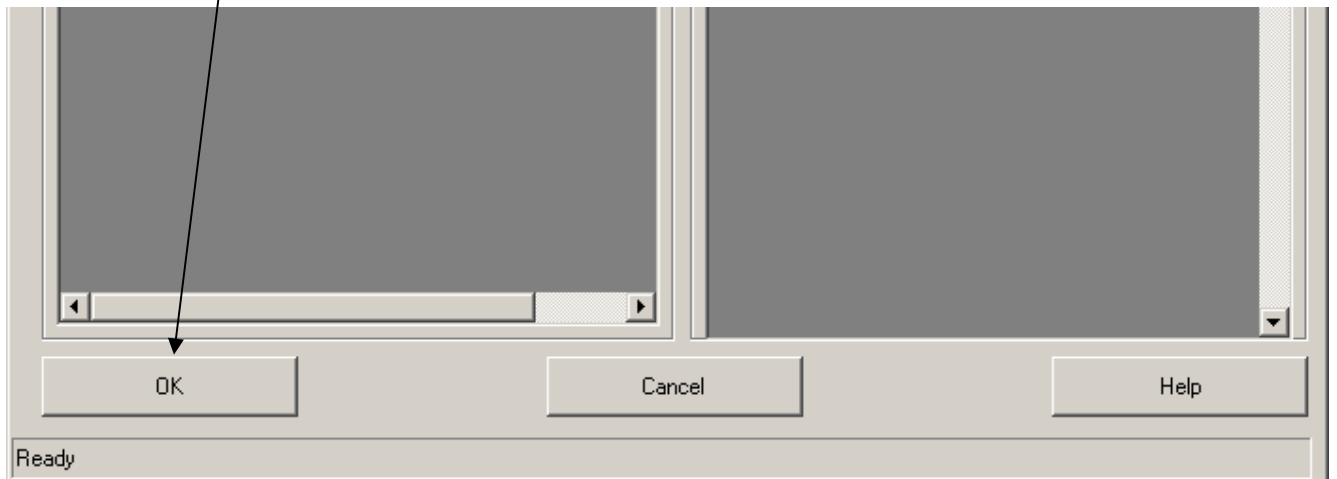
3. Configure instrument using the instrument upload configuration, as follows

B. Click on “Create a new configuration file by uploading instrument configuration”

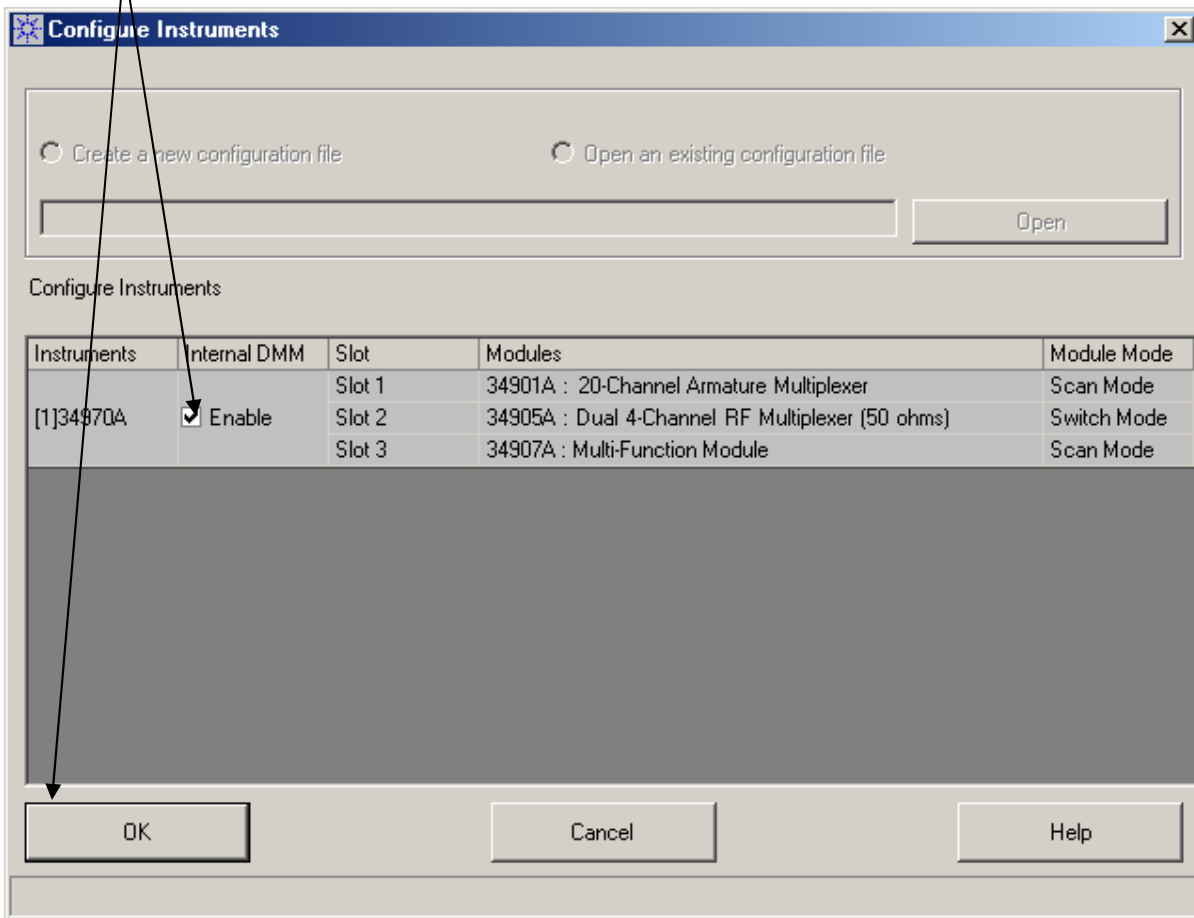


B. Select the instrument

C. Click on “OK”

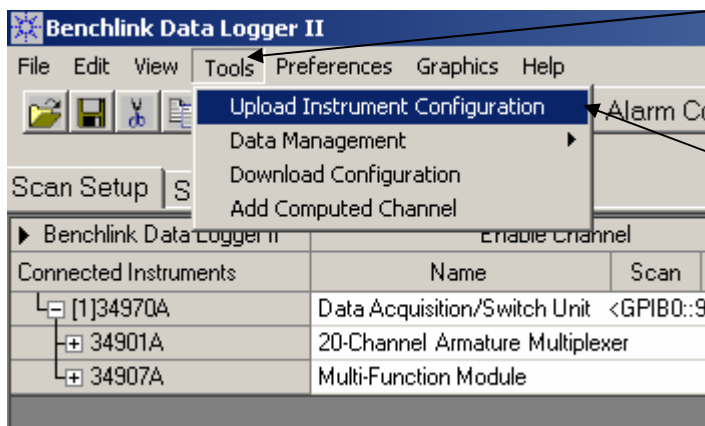


D. Make sure the correct instrument is selected, then click on “OK”



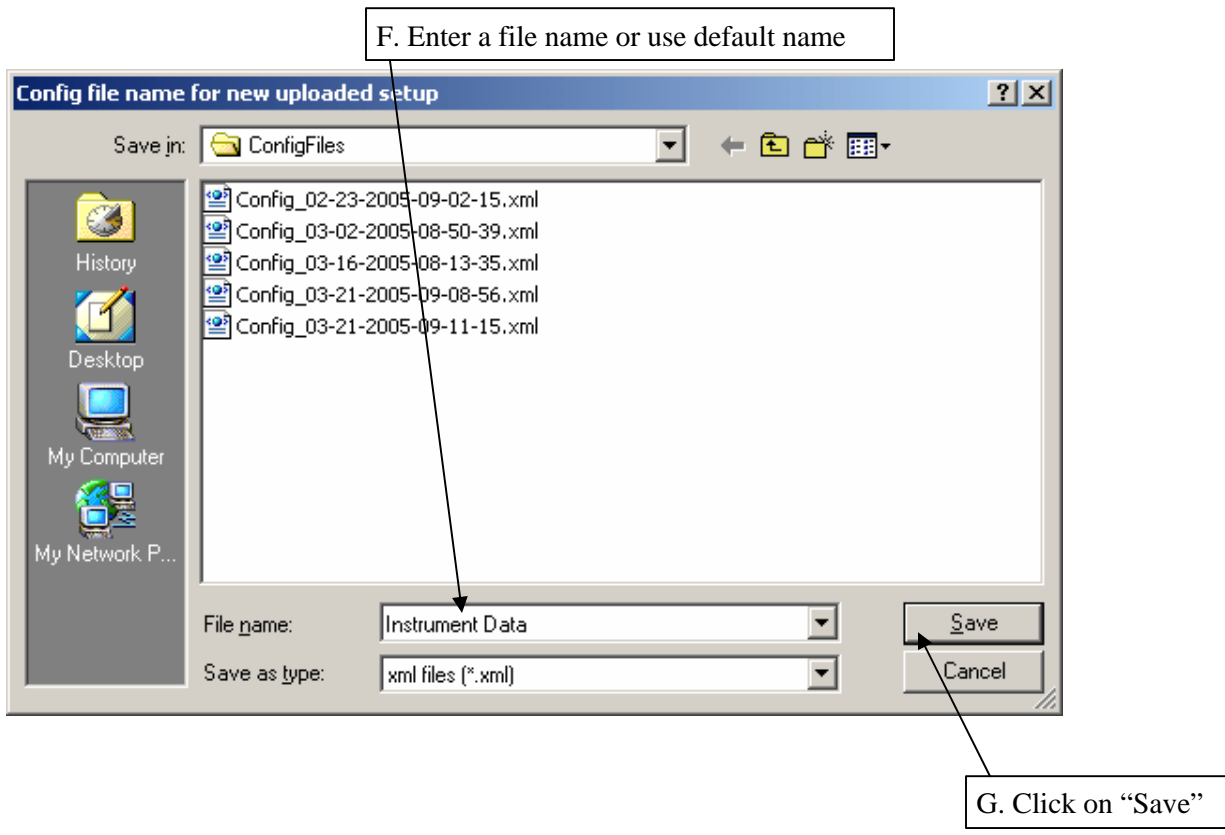
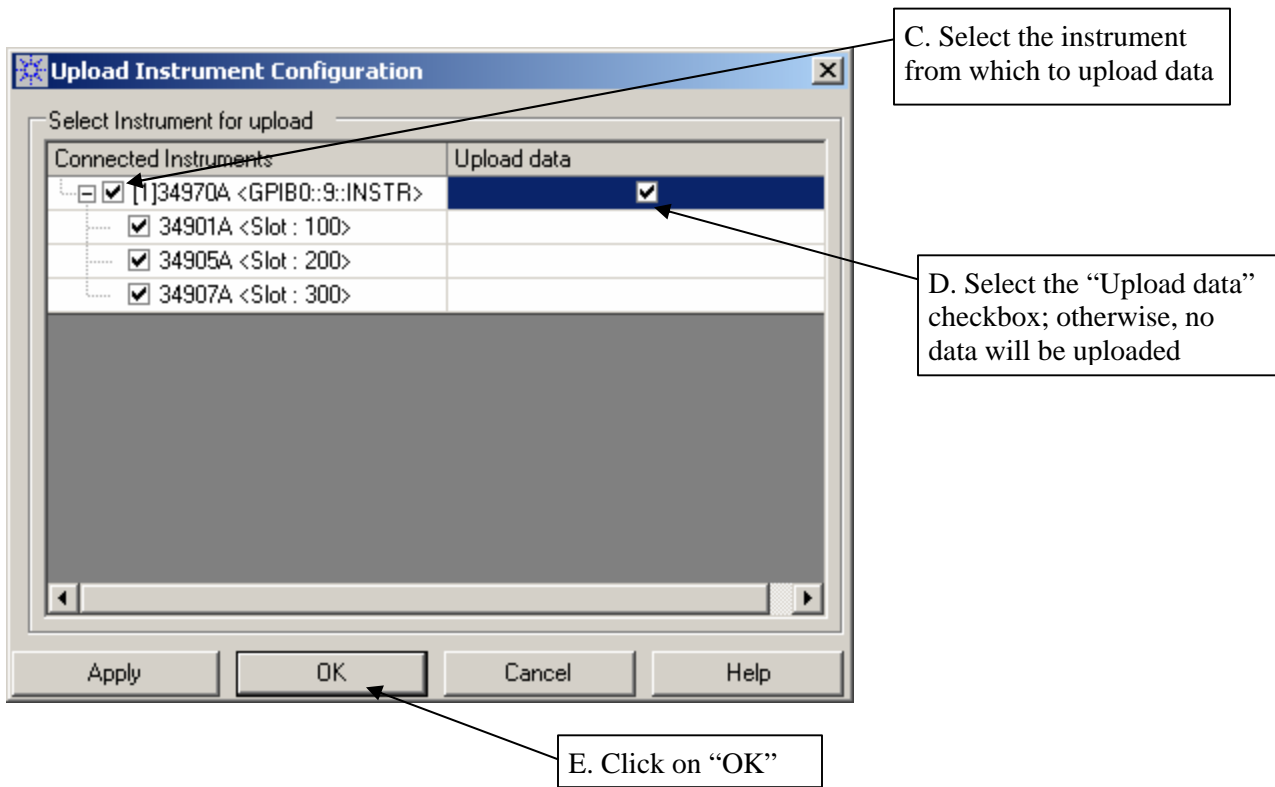
3. BenchLink DataLogger is next configured and the instrument data is ready to be uploaded. The main “Scan Setup” window is next displayed

4. To upload the data, do the following:

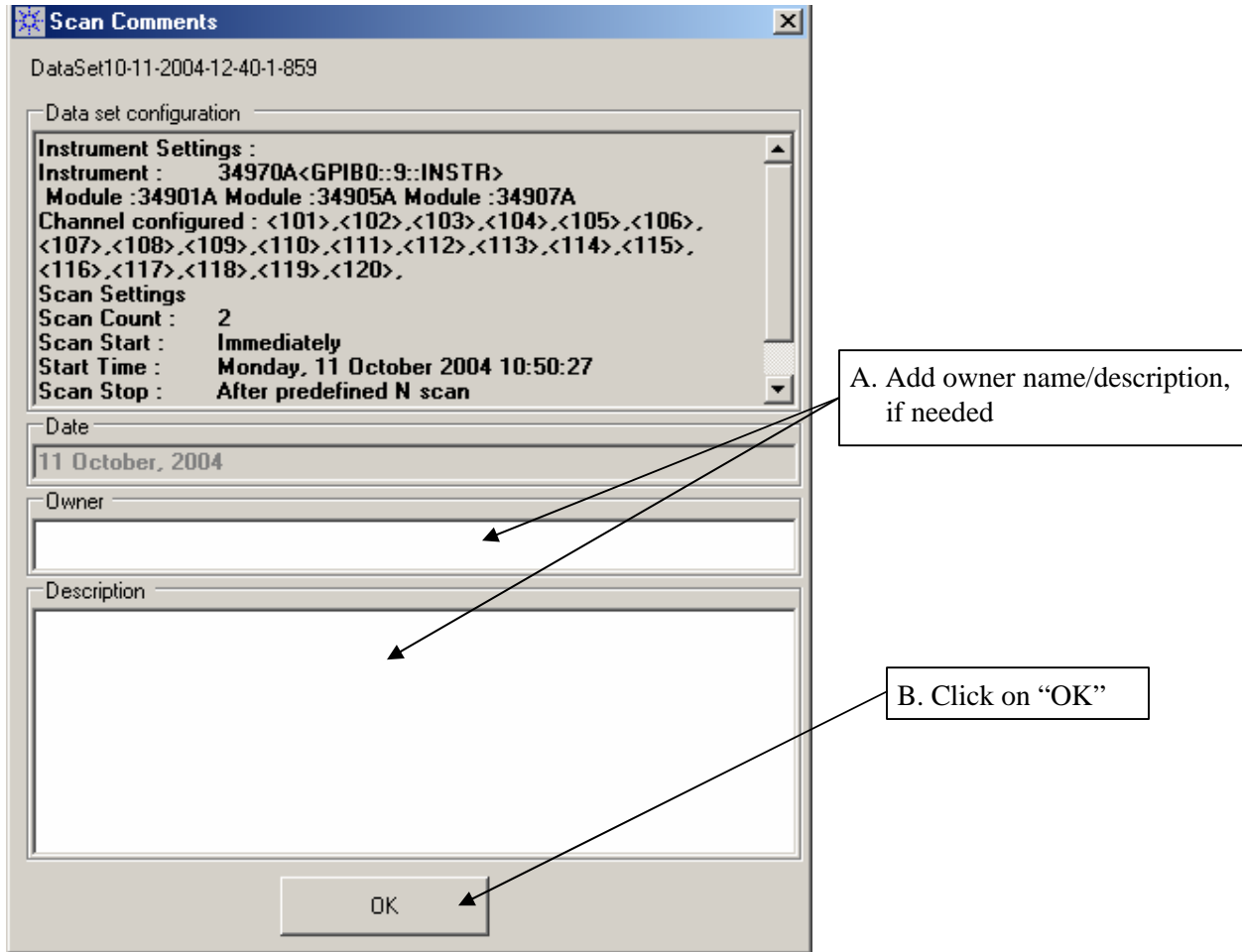


A. Click on “Tools” menu on the menu bar

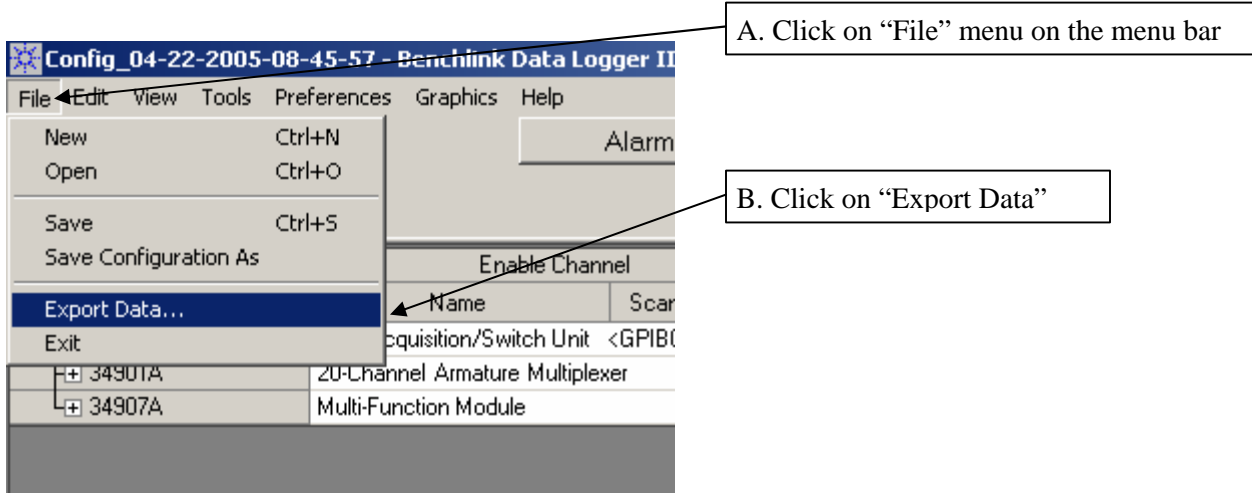
B. Click on “Upload Instrument Configuration”



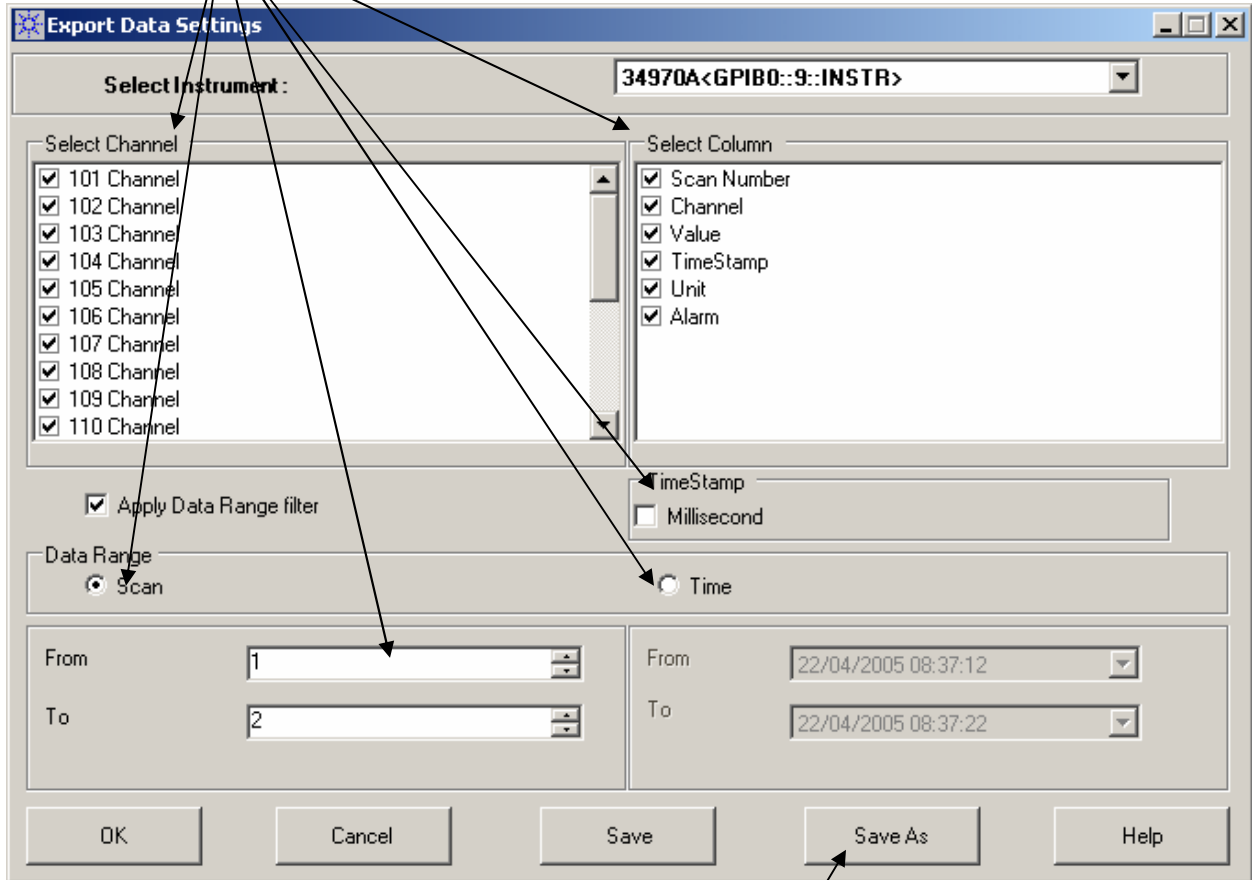
4. The instrument setup and data is next uploaded. When completed, the program displays the following window:



5. The "Data Browser" is next displayed. You can now save the data in a different file format, as follows:



C. Select the data you wish to export, like channels, scans, etc.



D. Click on "Save As"

6. The data can now be saved in a different data format. Select either the .CSV or .TXT file format. Either format can be loaded into Excel.

